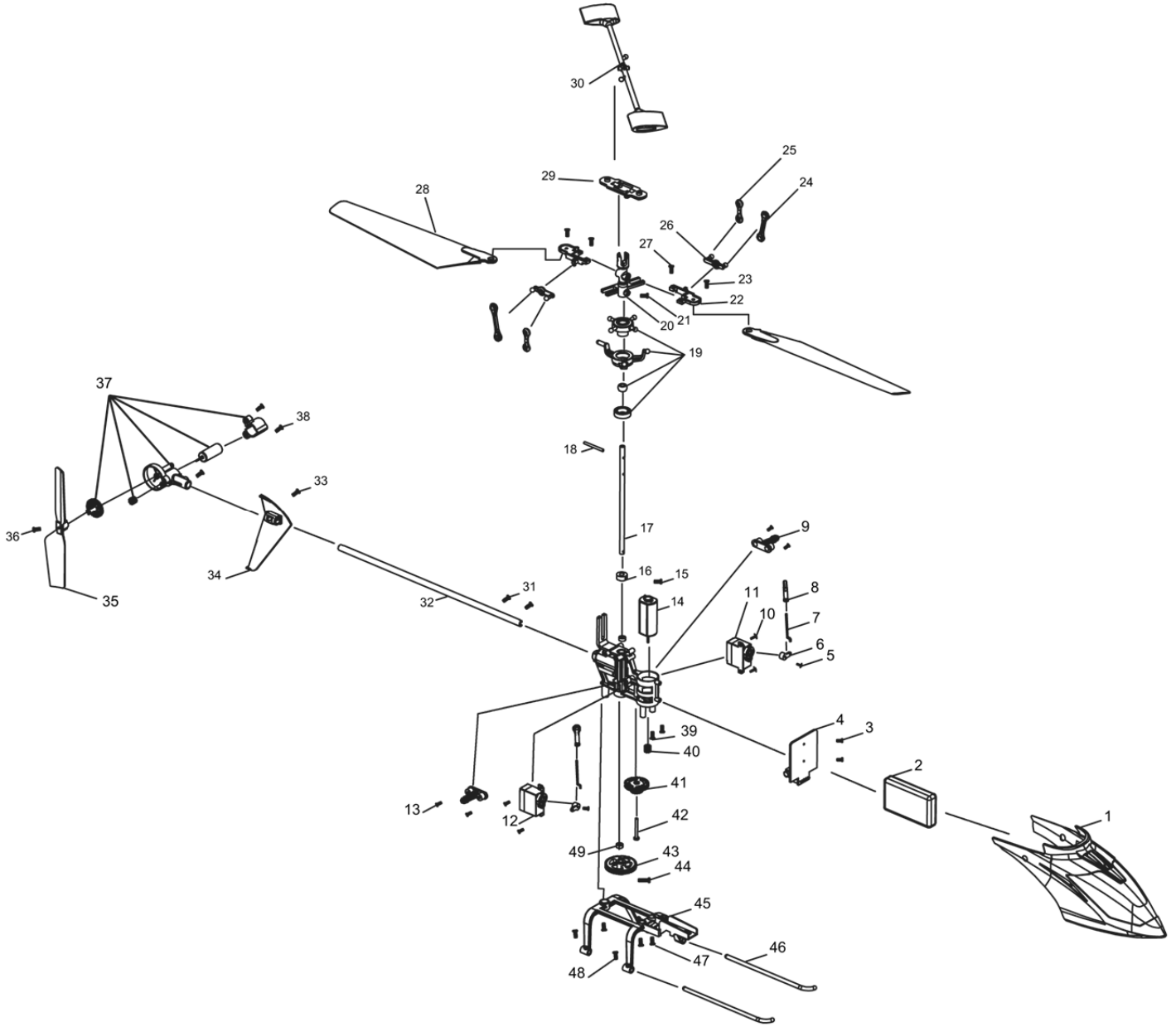


Exploded View



Exploded View Parts Listing

Exploded View #	Description (Total Quantity Used)	Included In Item #
1	Body/Canopy (1)	AZSH1274
2	Battery (1)	AZSH1255
3	M1.4x5mm Screw (4)	AZSH1256 or AZSH1270
4	4-in-1 Control Unit (1)	AZSH1256
5	M1.2x3mm Screw (2)	AZSH1257AS
6	Servo Arm (2)	AZSH1257AS
7	Servo Pushrod (2)	AZSH1268
8	Ball Link (2)	AZSH1268
9	Body/Canopy Mount (2)	AZSH1269
10	M1.4x4x4mm Screw (4)	AZSH1257L or AZSH1257R
11	Servo, Left (1)	AZSH1257L
12	Servo, Right (1)	AZSH1257R
13	M1.7x6mm Screw (12)	AZSH1269 or AZSH1273
14	Motor (1)	AZSH1259
15	M1.4x2.5mm Screw (5)	AZSH1264 or AZSH1270
16	Main Shaft Retaining Collar (1)	AZSH1264
17	Main Shaft (1)	AZSH1264
18	Feathering Spindle (1)	AZSH1262
19	Swashplate Assembly (1)	AZSH1267
20	Main Rotor Head/Hub (1)	AZSH1264
21	M1.7x6mm Screw (12)	AZSH1262 or AZSH1273
22	Main Rotor Blade Grip, Lower Part (2)	AZSH1262
23	M1.7x6mm Screw (12)	AZSH1262 or AZSH1273
24	Rotor Head Linkage, Long (2)	AZSH1261
25	Rotor Head Linkage, Short (2)	AZSH1261
26	Main Rotor Blade/Head Mixing Arm (2)	AZSH1262
27	M1.7x6mm Screw (12)	AZSH1262 or AZSH1273
28	Main Rotor Blade (2)	AZSH1263
29	Main Rotor Blade Grip, Upper Part (2)	AZSH1262
30	Flybar (1)	AZSH1260
31	M1.4x2.5mm Screw (5)	AZSH1264 or AZSH1270
32	Tailboom (1)	AZSH1270
33	M1.4x2.5mm Screw (5)	AZSH1264 or AZSH1270
34	Vertical Fin (1)	AZSH1270 or AZSH1272
35	Tail Rotor Blade (1)	AZSH1271
36	M1.7x4x5mm Screw (1)	AZSH1271
37	Tail Motor, Mount, Gear Assembly (1)	AZSH1270
38	M1.4x5mm Screw (4)	AZSH1270
39	M1.4x2.5x3.5mm Screw (2)	AZSH1259
40	Pinion (1)	AZSH1259

41	Intermediate Gear (1)	AZSH1265
42	Intermediate Gear Shaft (1)	AZSH1265
43	Main Gear (1)	AZSH1265
44	M1.5x7mm Screw (1)	AZSH1264 or AZSH1265
45	Landing Gear/Battery Holder (1)	AZSH1273
46	Landing Skid (2)	AZSH1273
47	M1.7x6mm Screw (12)	AZSH1262 or AZSH1273
48	M1.2x3mm Screw (4)	AZSH1273
49	Bearing, 3x6x2.5mm (2)	AZSH1266

Replacement Parts List

Item Number	Description
AZSH1254	1-Cell/1S 3.7V LiPo, 0.5A 110-240V AC Charger: Chronos FP 110
AZSH1255	500mAh 1-Cell/1S 3.7V 15C LiPo Battery, JST Connector: Chronos FP 110
AZSH1256	4-in-1 Control Unit, Rx/ESCs/Mixer/Gyro: Chronos FP 110
AZSH1257L	1.7-Gram Digital Servo, Left: Chronos FP 110
AZSH1257R	1.7-Gram Digital Servo, Right: Chronos FP 110
AZSH1257AS	1.7-Gram Digital Servo Arm Set: Chronos FP 110
AZSH1257GS	1.7-Gram Digital Servo Gear Set: Chronos FP 110
AZSH1258MD2	M4LPH Micro 4-Channel LP Helicopter Transmitter, Mode 2: Chronos FP 110
AZSH1259	Main Motor with Pinion Gear: Chronos FP 110
AZSH1260	Flybar: Chronos FP 110
AZSH1261	Rotor Head Linkage Set: Chronos FP 110
AZSH1262	Main Rotor Blade Grip and Mixing Arm Set (1 pair): Chronos FP 110
AZSH1263	Main Rotor Blade Set (1 pair): Chronos FP 110
AZSH1264	Main Shaft with Rotor Head/Hub: Chronos FP 110
AZSH1265	Main Gear Set: Chronos FP 110
AZSH1266	Bearing, 3x6x2.5mm (2pcs): Chronos FP 110
AZSH1267	Swashplate: Chronos FP 110
AZSH1268	Servo Pushrod Set: Chronos FP 110
AZSH1269	Main Frame Set: Chronos FP 110
AZSH1270	Tail Motor, Mount, Gear, Fin and Boom Assembly: Chronos FP 110
AZSH1271	Tail Rotor Blade: Chronos FP 110
AZSH1272	Vertical Fin: Chronos FP 110
AZSH1273	Landing Gear/Battery Holder Set: Chronos FP 110
AZSH1274	Canopy: Chronos FP 110